

Overview

KS2 Attainment 2025 · Actual results

24 pupils

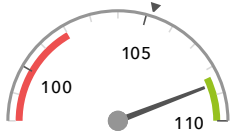
Average Scaled Score (Re, Ma)

% Expected standard+ (Re, Wr, Ma)

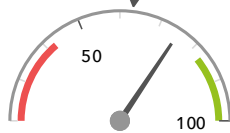
DFE

108.6 +

75%



Significantly above the national average (105.2) ↓



In line with the national average (63%) ↓

KS2 Progress 2025 · Value Added

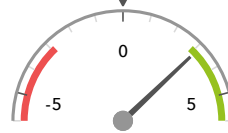
24 matched pupils

Average Scaled Score (Re, Ma)

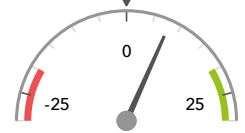
% Expected standard+ (Re, Wr, Ma)

+3.1 +

+8%



Significantly above the national average (0) ↓



In line with the national average (0%) ↓

KS2 higher and lower performing pupil groups 2025

Minimum group size: 5

	Higher performing	Lower performing
Overall achievement pupil progress	Spring Term (7) Not FSM (16) + No SEN (14) +	
KS2 reading achievement pupil progress	Summer Term (8) No SEN (14) FSM (ever) (8)	
KS2 writing achievement pupil progress	No SEN (14) + Higher attainers (14) + Not FSM (ever) (15)	Lower attainers (6) ↓ SEN Support (10) FSM (7)
KS2 mathematics achievement pupil progress	Spring Term (7) + Not FSM (16) + Not FSM (ever) (15) +	

Census information

KS2's latest academic year uses the Spring 2024 DfE census – [learn more](#) · [See recent Aspire updates](#)