

2023 KS2 School Dashboard

for governors & school leaders

Produce custom dashboards at fftaspire.org

St Cuthbert's Catholic Primary School, Seaham

LA Durham DfE 8403300 Produced October 2023 Version 1

What it is

Seven easy-to-use reports that help governors and school leaders to evaluate school performance using the latest 2023 school performance indicators.

What it tells you

What are the strengths, areas for improvement and under-performing groups of pupils

How does attainment and pupil progress compare to the national average this academic year?

How are you performing in different subjects?

How might the context of your school affect performance?

About the data shown

1 2 3

Actual results

Actual results for your school, using a range of measures such as averages and thresholds.



Gauges

These display headline indicators and whether actual results and pupils' progress are in line with, or significantly above or below, the national average.

ESTIMATED



1 2 3

Pupil progress

The value added progress that your pupils have made from one key stage to the next. FFT compares your actual results to the estimated results based on the progress of similar pupils nationally.



Statistical significance

Green plus signs and red minus signs highlight where either actual results or pupils' progress is significantly above or below the national average.



Trends

The dashboard analyses school performance over 3-5 years. Any significant year-on-year improvement is highlighted using an up arrow. Significant declines in performance are highlighted with a down arrow.



Strengths & weaknesses

These highlight key pupil groups and subjects where progress is above or below the national average.

Working in partnership with



Data sources

Generated from FFT Aspire which includes data sourced from the DfE (National Pupil Database) and data calculated by FFT. FFT is accredited as a DfE supplier to receive early access to ASP data. Headline performance indicators will be consistent with the DfE School Performance Tables and ASP.

Overview

KS2 Attainment 2023 · Actual results

30 pupils

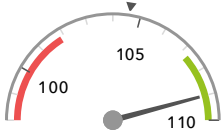
Average Scaled Score (Re, Ma)

% Expected standard+ (Re, Wr, Ma)

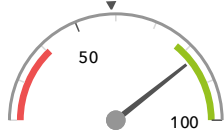
DFE

109.0+

83%+



Significantly above the national average (104.6) ◀



Significantly above the national average (59%) ◀

KS2 Progress 2023 · Value Added

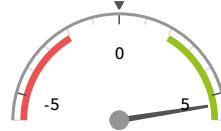
30 matched pupils

Average Scaled Score (Re, Ma)

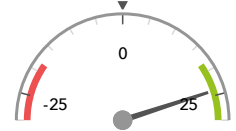
% Expected standard+ (Re, Wr, Ma)

+5.4+

+24%+



Significantly above the national average (0) ◀



Significantly above the national average (0%) ◀

KS2 higher and lower performing pupil groups 2023

Minimum group size: 5

	Higher performing	Lower performing
Overall achievement pupil progress	Lower attainers (8)+ Spring Term (6)+ Summer Term (11)+	
KS2 reading achievement pupil progress	Lower attainers (8)+ SEN Support (6)+ Summer Term (11)+	
KS2 writing achievement pupil progress	Lower attainers (8)+ Higher attainers (8) Spring Term (6)	SEN Support (6)
KS2 mathematics achievement pupil progress	Lower attainers (8)+ Summer Term (11)+ Spring Term (6)+	

Census information

KS2's latest academic year uses the Spring 2023 DfE census – [learn more](#) · [See recent Aspire updates](#)

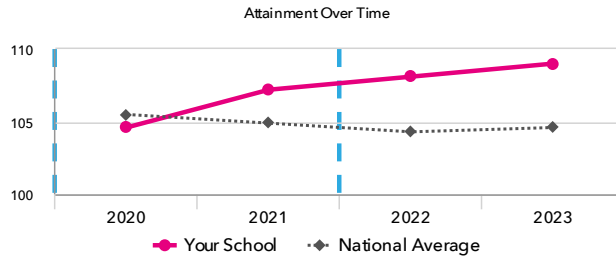
Attainment & progress

KS2 Attainment 2023

30 pupils

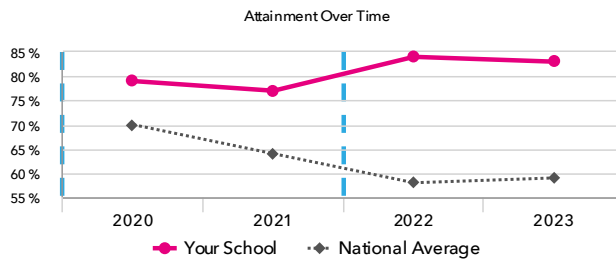
Average Scaled Score (Re, Ma)

109.0+



% Expected standard+ (Re, Wr, Ma) DFE

83%+



KS2 Progress 2023

30 matched pupils

Average Scaled Score (Re, Ma)

+5.4+



% Expected standard+ (Re, Wr, Ma)

+24%+



KS2 performance summary

	Actual results			Pupil progress		
	2021	2022	2023	2021	2022	2023
Number of Pupils / % Matched	26	32	30	100%	100%	100%
% Expected standard+ (Re, Wr, Ma)	77%	84%+	83%+	+12%	+20%+	+24%+
% Higher standard (Re, Wr, Ma)	19%	22%+	20%+	+6%	+14%+	+11%+
Average Scaled Score (Re, GPS, Ma)	107.6	108.1+	108.9+	+2.5+↑	+3.6+	+5.3+
Average Scaled Score (Re, Ma)	107.2	108.1+	109.0+	+2.2+↑	+3.7+	+5.4+
% Expected standard+ Reading	88%	97%+	93%+	+11%	+17%+	+20%+
% Higher standard Reading	31%	50%+	57%+	-2%	+18%+	+27%+
Scaled Score Reading	106.8	109.3+	109.5+	+1.6	+4.4+	+5.4+
% Expected standard+ Writing	77%	84%	83%	+5%	+10%	+12%
% Higher standard Writing	27%	28%+	20%	+8%	+14%+	+5%
Scaled Score Writing	106.8	103.6+	102.6	+1.8	+2.9+	+2.4+
% Expected standard+ Maths	88%	91%+	90%+	+13%	+13%	+17%+
% Higher standard Maths	38%	38%+	50%+	+14%	+13%	+26%+
Scaled Score Maths	107.6+	106.8+	108.5+	+2.8+↑	+2.9+	+5.3+↑
% Expected standard+ Grammar, Punctuation & Spelling	81%	94%+	90%+	+5%	+16%+	+18%+
% Higher standard Grammar, Punctuation & Spelling	38%	47%+	50%+	+10%	+15%	+19%+
Scaled Score Grammar, Punctuation & Spelling	108.4	109.3+	109.2+	+2.4	+4.1+	+5.2+
% Expected standard+ Science	-	91%	83%	-	-	-

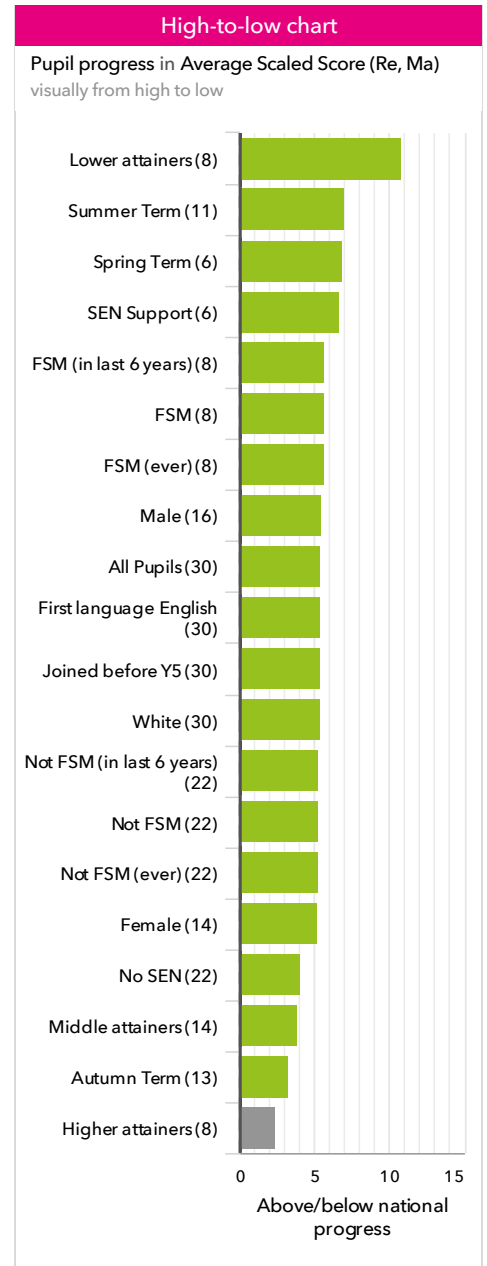
Census information

KS2's latest academic year uses the Spring 2023 DfE census – [learn more](#) · [See recent Aspire updates](#)

Pupil groups

KS2 Pupil groups performance 2023

	Pupils	Actual results			Pupil progress			
		Average Scaled Score (Re, Ma)	% Expected standard+ (Re, Wr, Ma) <small>DFE</small>	% Higher standard (Re, Wr, Ma) <small>DFE</small>	Average Scaled Score (Re, Ma)	% Expected standard+ (Re, Wr, Ma)	% Higher standard (Re, Wr, Ma)	
Summary	All Pupils	30	109.0 +	83% +	20% +	+5.4 +	+24% +	+11% +
Gender	Male	16	108.7 +	88% +	19%	+5.5 +	+32% +	+10%
	Female	14	109.4 +	79%	21%	+5.2 +	+14%	+13%
DFE Prior Attainment	Higher attainers	8	113.9	100%	75% +	+2.4	+6%	+45% +
	Middle attainers	14	108.6 +	93% +	0%	+3.9 +	+27%	-2%
	Lower attainers	8	104.7 +	50% +	0%	+10.8 +	+36% +	-0%
Pupil Premium	FSM (in last 6 years)	8	106.4	63%	25% +	+5.7 +	+14%	+19% +
	Not FSM (in last 6 years)	22	110.0 +	91% +	18%	+5.3 +	+27% +	+8%
FSM	FSM	8	106.4	63%	25% +	+5.7 +	+14%	+19% +
	Not FSM	22	110.0 +	91% +	18%	+5.3 +	+27% +	+8%
FSM Ever	FSM (ever)	8	106.4	63%	25% +	+5.7 +	+14%	+19% +
	Not FSM (ever)	22	110.0 +	91% +	18%	+5.3 +	+27% +	+8%
Term of Birth	Autumn Term	13	111.0 +	100% +	38% +	+3.3 +	+23%	+25% +
	Spring Term	6	106.8	67%	17%	+6.9 +	+22%	+12%
	Summer Term	11	107.9	73%	0%	+7.0 +	+26%	-6%
SEN Group	SEN Support	6	104.5	33%	0%	+6.7 +	+5%	-3%
	EHC Plan	2	104.5	50%	0%	+15.6	+47%	-0%
	No SEN	22	110.6 +	100% +	27% +	+4.1 +	+27% +	+16% +
EAL	First language English	30	109.0 +	83% +	20% +	+5.4 +	+24% +	+11% +
Mobility	Joined before Y5	30	109.0 +	83% +	20% +	+5.4 +	+24% +	+11% +
Ethnicity	White	30	109.0 +	83% +	20% +	+5.4 +	+24% +	+11% +



Census information

KS2's latest academic year uses the Spring 2023 DfE census – [learn more](#) · [See recent Aspire updates](#)

Subjects

KS2 subject performance 2023

	Actual results			Pupil progress			Actual results over time		
	2021	2022	2023	2021	2022	2023			
Number of Pupils / % Matched	26	32	30	100%	100%	100%			
Reading									
% Expected standard+	88%	97% +	93% +	+11%	+17% +	+20% +			
% Higher standard	31%	50% +	57% +	-2%	+18% +	+27% +			
Scaled Score	107	109 +	110 +	+1.6	+4.4 +	+5.4 +			
Writing									
% Expected standard+	77%	84%	83%	+5%	+10%	+12%			
% Higher standard	27%	28% +	20%	+8%	+14% +	+5%			
Scaled Score	107	104 +	103	+1.8	+2.9 +	+2.4 +			
Maths									
% Expected standard+	88%	91% +	90% +	+13%	+13%	+17% +			
% Higher standard	38%	38% +	50% +	+14%	+13%	+26% +			
Scaled Score	108 +	107 +	108 +	+2.8 + ↑	+2.9 +	+5.3 + ↑			
Grammar, Punctuation & Spelling									
% Expected standard+	81%	94% +	90% +	+5%	+16% +	+18% +			
% Higher standard	38%	47% +	50% +	+10%	+15%	+19% +			
Scaled Score	108	109 +	109 +	+2.4	+4.1 +	+5.2 +			
Science									
% Expected standard+	-	91%	83%	-	-	-			

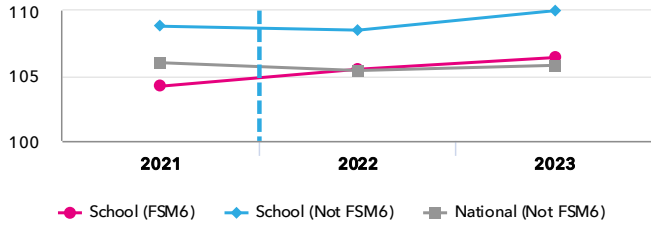
Census information

KS2's latest academic year uses the Spring 2023 DfE census – [learn more](#) · [See recent Aspire updates](#)

Disadvantaged pupils

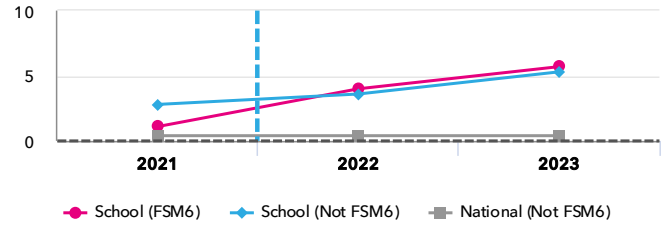
KS2 attainment for disadvantaged pupils 2023

Average Scaled Score (Re, Ma)

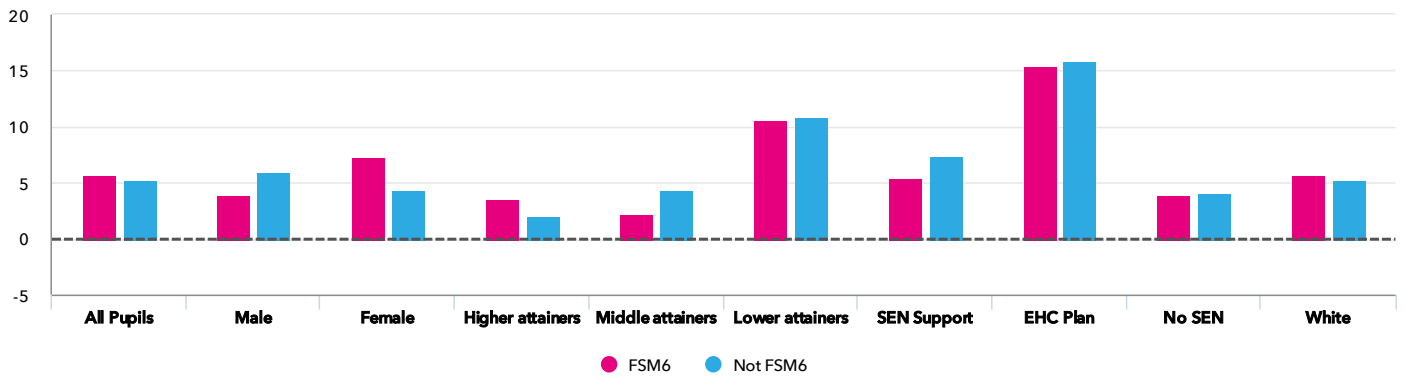


KS2 progress for disadvantaged pupils 2023

Average Scaled Score (Re, Ma)



Progress gap Average Scaled Score (Re, Ma)



Attainment & progress

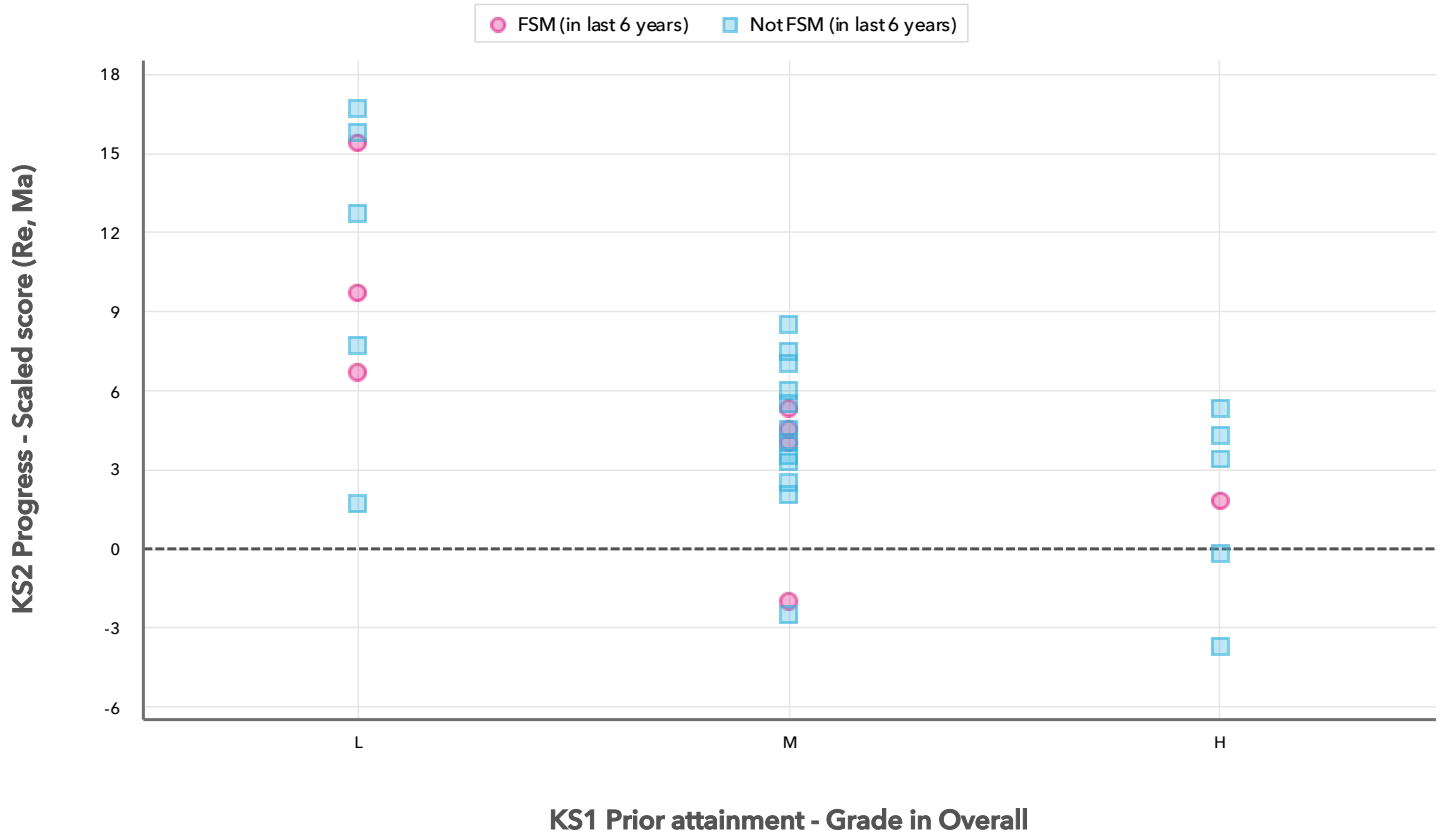
Pupils		Attainment					Progress		
		Average Scaled Score (Re, Ma)			Average Scaled Score (Re, Ma)				
		FSM6	Not FSM6	Gap	FSM6	Not FSM6	Gap		
Summary	All Pupils	8	22	106.4	110.5 ⁺	-3.6	5.7 ⁺	5.3 ⁺	0.4
Gender	Male	4	12	105.4	109.8	-4.4	4	6	-2
	Female	4	10	107.4	110.2	-2.8	7.3	4.4	2.9
DFE Prior Attainment	Higher attainers	2	6	114.3	113.8	0.5	3.6	2.1	1.5
	Middle attainers	3	11	105.8	109.4	-3.6	2.2	4.4	-2.2
	Lower attainers	3	5	101.7	106.5	-4.8	10.6	10.9	-0.3
SEN Group	SEN Support	2	4	100	106.8	-6.8	5.4	7.4	-2
	EHC Plan	1	1	101	108	-7	15.4	15.8	-0.4
	No SEN	5	17	110	110.8	-0.8	3.9	4.1	-0.2
Ethnic Group	White	8	22	106.4	110	-3.6	5.7	5.3	0.4

Census information

KS2's latest academic year uses the Spring 2023 DfE census – [learn more](#) · [See recent Aspire updates](#)

Scatterplot

KS2 Pupil scatterplot 2023 30 pupils highlighted by Pupil Premium



Census information

KS2's latest academic year uses the Spring 2023 DfE census – [learn more](#) · [See recent Aspire updates](#)

Context

Context · Year 6

		Pupils	Comparative profile 2022 / 2023		Absence during Key Stage 2		Persistent absence during Key Stage 2	
		School	School	National	School	National	School	National
Summary	All Pupils	30	100%	100%	-	-	-	-
Gender	Male	16	53%	51%	-	-	-	-
	Female	14	47%	49%	-	-	-	-
DFE Prior Attainment	Higher attainers	8	27%	29%	-	-	-	-
	Middle attainers	14	47%	45%	-	-	-	-
	Lower attainers	8	27%	21%	-	-	-	-
Pupil Premium	FSM (in last 6 years)	8	27%	30%	-	-	-	-
	Not FSM (in last 6 years)	22	73%	70%	-	-	-	-
FSM	FSM	8	27%	27%	-	-	-	-
	Not FSM	22	73%	72%	-	-	-	-
FSM Ever	FSM (ever)	8	27%	30%	-	-	-	-
	Not FSM (ever)	22	73%	69%	-	-	-	-
Term of Birth	Autumn Term	13	43%	34%	-	-	-	-
	Spring Term	6	20%	33%	-	-	-	-
	Summer Term	11	37%	34%	-	-	-	-
SEN Group	SEN Support	6	20%	16%	-	-	-	-
	EHC Plan	2	7%	5%	-	-	-	-
	No SEN	22	73%	79%	-	-	-	-
EAL	First language English	30	100%	77%	-	-	-	-
Mobility	Joined before Y5	30	100%	92%	-	-	-	-
Ethnicity	White	30	100%	71%	-	-	-	-

Census information

KS2's latest academic year uses the Spring 2023 DfE census – [learn more](#) · [See recent Aspire updates](#)