

2021 self-evaluation reports have been calculated using the teacher assessments provided by schools as part of the FFT End of Key Stage Assessment Service. ?

St Cuthbert's Catholic Primary School, Seaham

2021 KS2

Overview

KS2 Attainment 2021 · Actual results

26 pupils

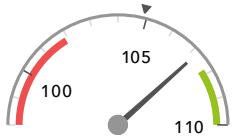
Average Scaled Score (Re, Ma)

% Expected standard+ (Re, Wr, Ma)

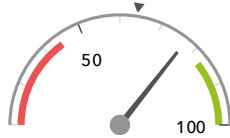
DFE

107.2

77%



In line with the national average (104.9) ◀



In line with the national average (64%) ◀

KS2 Progress 2021 · Value Added

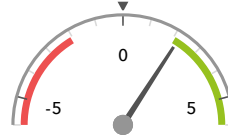
26 matched pupils

Average Scaled Score (Re, Ma)

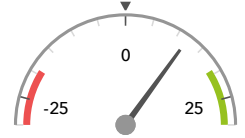
% Expected standard+ (Re, Wr, Ma)

+2.2 + ↑

+12%



Significantly above the national average (0) ◀



In line with the national average (0%) ◀

KS2 higher and lower performing pupil groups 2021

Minimum group size: 5

	Higher performing	Lower performing
Overall achievement pupil progress	Lower attainers (6) Spring Term (6) Not FSM (17) + ↑	
KS2 reading achievement pupil progress	Lower attainers (6) ↑ Male (13) Spring Term (6)	Higher attainers (5)
KS2 writing achievement pupil progress	Higher attainers (5) Not FSM (17) Not FSM (in last 6 years) (17)	
KS2 mathematics achievement pupil progress	Lower attainers (6) + Spring Term (6) Not FSM (17) + ↑	