

2023 KS1 School Dashboard

for governors & school leaders

Produce custom dashboards
at fftaspire.org

St Cuthbert's Catholic Primary School, Seaham

LA Durham DFE 8403300 Produced November 2023 Version 1

What it is

Seven easy-to-use reports that help governors and school leaders to evaluate school performance using the latest 2023 school performance indicators.

What it tells you

What are the strengths, areas for improvement and under-performing groups of pupils

How does attainment and pupil progress compare to the national average this academic year?

How are you performing in different subjects?

How might the context of your school affect performance?

About the data shown

1 2 3

Actual results

Actual results for your school, using a range of measures such as averages and thresholds.



Gauges

These display headline indicators and whether actual results and pupils' progress are in line with, or significantly above or below, the national average.

ESTIMATED



1 2 3

Pupil progress

The value added progress that your pupils have made from one key stage to the next. FFT compares your actual results to the estimated results based on the progress of similar pupils nationally.



Statistical significance

Green plus signs and red minus signs highlight where either actual results or pupils' progress is significantly above or below the national average.



Trends

The dashboard analyses school performance over 3-5 years. Any significant year-on-year improvement is highlighted using an up arrow. Significant declines in performance are highlighted with a down arrow.



Strengths & weaknesses

These highlight key pupil groups and subjects where progress is above or below the national average.

Working in partnership with



Data sources

Generated from FFT Aspire which includes data sourced from the DfE (National Pupil Database) and data calculated by FFT. FFT is accredited as a DfE supplier to receive early access to ASP data. Headline performance indicators will be consistent with the DfE School Performance Tables and ASP.

2023 Value Added has only been calculated for pupils who we received EYFSP data as part of the 2021 FFT Results Service

St Cuthbert's Catholic Primary School, Seaham

2023 KS1 VA

Overview

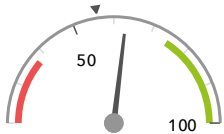
KS1 Attainment 2023 - Actual results

30 pupils

% Expected Standard + (Re, Wr, Ma)

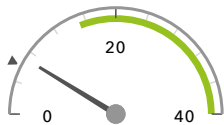
% Higher Standard (Re, Wr, Ma)

63%



In line with the national average (56%) ◀

7%



In line with the national average (6%) ◀

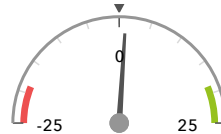
KS1 Progress 2023 - Value Added

27 matched pupils

% Expected Standard + (Re, Wr, Ma)

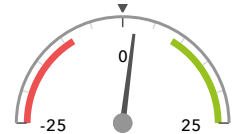
% Higher Standard (Re, Wr, Ma)

+1%



In line with the national average (0%) ◀

+2%



In line with the national average (0%) ◀

KS1 higher and lower performing pupil groups 2023

Minimum group size: 5

	Higher performing	Lower performing
Overall achievement pupil progress	No SEN (25) Autumn Term (12) Female (14)	Lower attainers (6)
KS1 reading achievement pupil progress	Female (14) Autumn Term (12) No SEN (25)	Lower attainers (6) Male (13)
KS1 writing achievement pupil progress	No SEN (25) Female (14) Higher attainers (18)	Lower attainers (6)
KS1 mathematics achievement pupil progress	Male (13) Summer Term (11) Lower attainers (6)	Female (14)

Census information

KS1's latest academic year uses the Spring 2023 DfE census – [learn more](#) · [See recent Aspire updates](#)

2023 Value Added has only been calculated for pupils who we received EYFSP data as part of the 2021 FFT Results Service

St Cuthbert's Catholic Primary School, Seaham

2023 KS1 VA

Attainment & progress

KS1 Attainment 2023

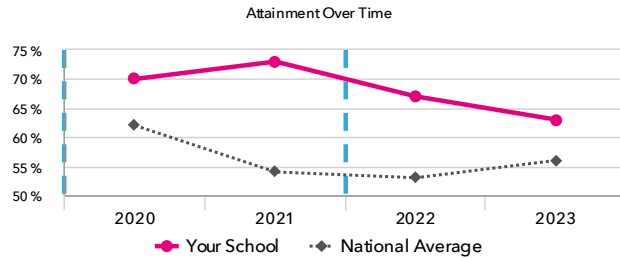
30 pupils

% Expected Standard + (Re, Wr, Ma)

63%



In line with the national average (56%)

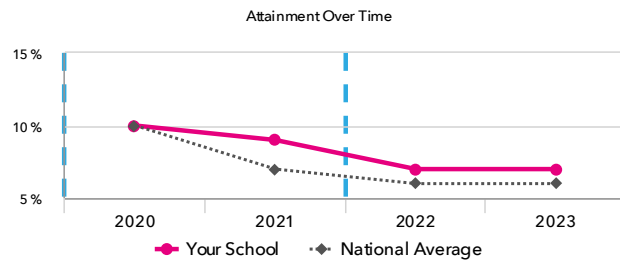


% Higher Standard (Re, Wr, Ma)

7%



In line with the national average (6%)



KS1 Progress 2023

27 matched pupils

% Expected Standard + (Re, Wr, Ma)

+1%



In line with the national average (0%)

% Higher Standard (Re, Wr, Ma)

+2%



In line with the national average (0%)

KS1 performance summary

	Actual results			Pupil progress		
	2021	2022	2023	2021	2022	2023
Number of Pupils / % Matched	22	30	30	100%	93%	90%
% Expected Standard + (Re, Wr, Ma)	73%	67%	63%	+11%	+25% ⁺	+1%
% Higher Standard (Re, Wr, Ma)	9%	7%	7%	+2%	+5%	+2%
% Expected Standard + Reading	77%	70%	83%	+3%	+13%	+7%
% Higher Standard Reading	23%	23%	27%	-1%	+14% ⁺	+10%
% Expected Standard + Writing	77%	67%	80% ⁺	+11%	+21% ⁺	+12%
% Higher Standard Writing	18%	7%	7%	+7%	+3%	+0%
% Expected Standard + Maths	73%	73%	87%	-0%	+13%	+3%
% Higher Standard Maths	23%	17%	20%	+4%	+8%	+5%

Census information

KS1's latest academic year uses the Spring 2023 DfE census – [learn more](#) · [See recent Aspire updates](#)

2023 Value Added has only been calculated for pupils who we received EYFSP data as part of the 2021 FFT Results Service

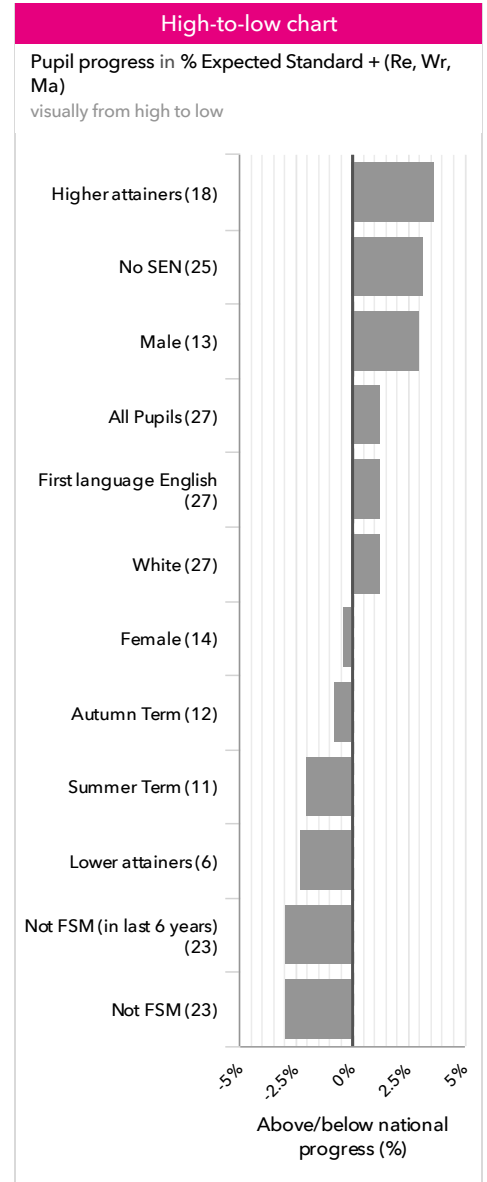
St Cuthbert's Catholic Primary School, Seaham

2023 KS1 VA

Pupil groups

KS1 Pupil groups performance 2023

	Pupils	Actual results		Pupil progress		
		% Expected Standard + (Re, Wr, Ma)	% Higher Standard (Re, Wr, Ma)	% Expected Standard + (Re, Wr, Ma)	% Higher Standard (Re, Wr, Ma)	
Summary	All Pupils	30	63%	7%	+1%	+2%
Gender	Male	14	57%	7%	+3%	+3%
	Female	16	69%	6%	-0%	+2%
Prior Attainment	Higher attainers	18	83%	11%	+4%	+4%
	Middle attainers	3	33%	0%	-6%	-1%
	Lower attainers	6	33%	0%	-2%	-1%
Pupil Premium	FSM (in last 6 years)	5	100% +	20% +	+25%	+19%
	Not FSM (in last 6 years)	25	56%	4%	-3%	-0%
FSM	FSM	5	100% +	20% +	+25%	+19%
	Not FSM	25	56%	4%	-3%	-0%
Term of Birth	Summer Term	13	46%	0%	-2%	-1%
	Spring Term	4	100%	25%	+16%	+15%
	Autumn Term	12	75%	8%	-1%	+2%
SEN Group	SEN Support	3	0%	0%	-23%	-0%
	No SEN	27	70%	7%	+3%	+3%
EAL	First language not English	1	0%	0%	-	-
	First language English	29	66%	7%	+1%	+2%
Ethnicity	White	29	66%	7%	+1%	+2%
	Indian	1	0%	0%	-	-



Census information

KS1's latest academic year uses the Spring 2023 DfE census – [learn more](#) · [See recent Aspire updates](#)

2023 Value Added has only been calculated for pupils who we received EYFSP data as part of the 2021 FFT Results Service

St Cuthbert's Catholic Primary School, Seaham

2023 KS1 VA

Subjects

KS1 subject performance 2023

	Actual results			Pupil progress			Actual results over time
	2021	2022	2023	2021	2022	2023	
Number of Pupils / % Matched	22	30	30	100%	93%	90%	
Reading							
% Expected Standard +	77%	70%	83%	+3%	+13%	+7%	
% Higher Standard	23%	23%	27%	-1%	+14%	+10%	
Writing							
% Expected Standard +	77%	67%	80%	+11%	+21%	+12%	
% Higher Standard	18%	7%	7%	+7%	+3%	+0%	
Maths							
% Expected Standard +	73%	73%	87%	-0%	+13%	+3%	
% Higher Standard	23%	17%	20%	+4%	+8%	+5%	
Science							
% Expected Standard +	-	83%	90%	-	-	-	

Census information

KS1's latest academic year uses the Spring 2023 DfE census – [learn more](#) · [See recent Aspire updates](#)

2023 Value Added has only been calculated for pupils who we received EYFSP data as part of the 2021 FFT Results Service

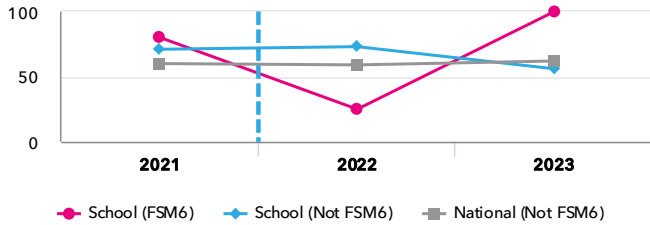
St Cuthbert's Catholic Primary School, Seaham

2023 KS1 VA

Disadvantaged pupils

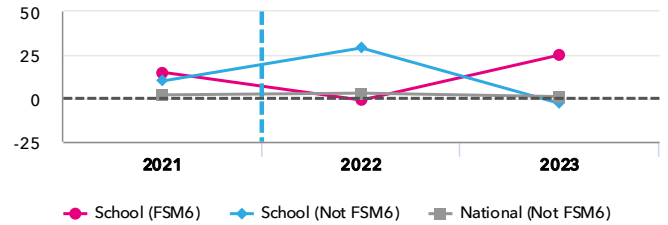
KS1 attainment for disadvantaged pupils 2023

% Expected Standard + (Re, Wr, Ma)

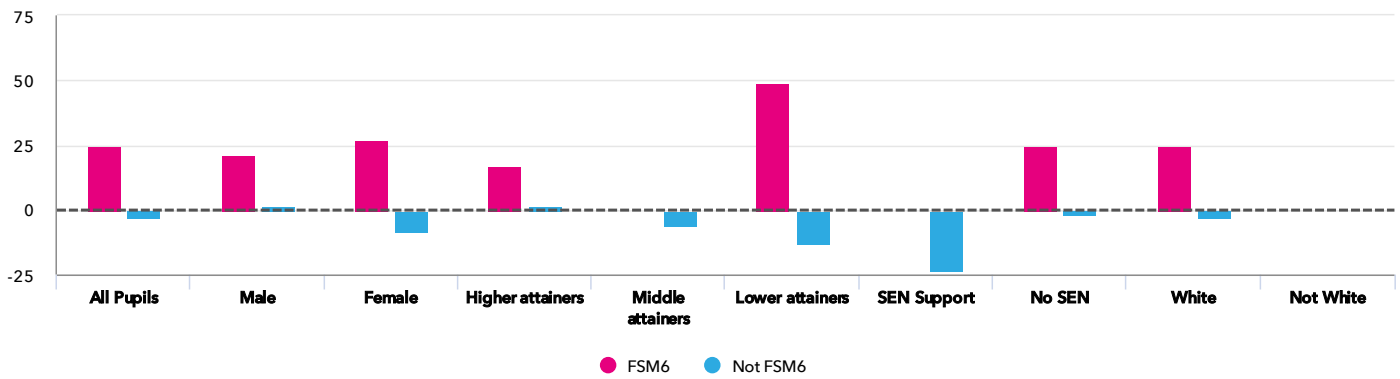


KS1 progress for disadvantaged pupils 2023

% Expected Standard + (Re, Wr, Ma)



Progress gap % Expected Standard + (Re, Wr, Ma)



Attainment & progress

Pupils	FSM6	Not FSM6	Attainment			Progress			
			% Expected Standard + (Re, Wr, Ma)			% Expected Standard + (Re, Wr, Ma)			
			FSM6	Not FSM6	Gap	FSM6	Not FSM6	Gap	
Summary	All Pupils	5	25	100% ⁺	56%	44%	25%	-3%	28%
Gender	Male	1	13	100%	54%	46%	21%	1%	20%
	Female	4	12	100%	58%	42%	27%	-8%	35%
Prior Attainment	Higher attainers	3	15	100%	80%	20%	17%	1%	16%
	Middle attainers	-	3	-	33%	-	-	-6%	-
	Lower attainers	1	5	100%	20%	80%	49%	-13%	62%
SEN Group	SEN Support	-	3	-	0%	-	-	-23%	-
	No SEN	5	22	100%	64%	36%	25%	-1%	26%
Ethnic Group	White	5	24	100%	58%	42%	25%	-3%	28%
	Not White	-	1	-	0%	-	-	-	-

Census information

KS1's latest academic year uses the Spring 2023 DfE census – [learn more](#) · [See recent Aspire updates](#)

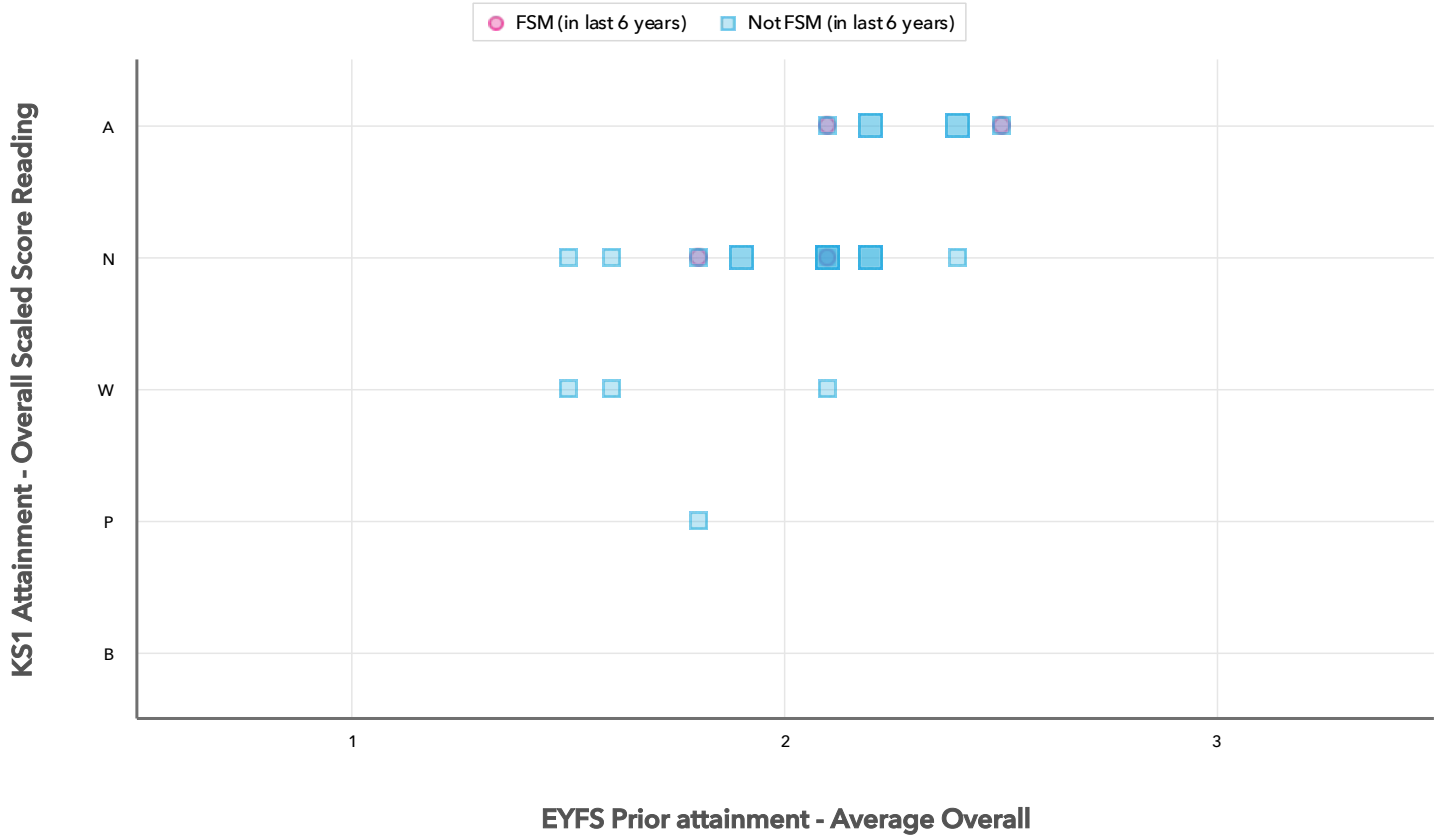
2023 Value Added has only been calculated for pupils who we received EYFSP data as part of the 2021 FFT Results Service

St Cuthbert's Catholic Primary School, Seaham

2023 KS1 VA

Scatterplot

KS1 Pupil scatterplot 2023 30 pupils highlighted by Pupil Premium



Census information

KS1's latest academic year uses the Spring 2023 DfE census – [learn more](#) · [See recent Aspire updates](#)

Context

Context · Year 2

		Pupils		Comparative profile 2022 / 2023		Absence during Key Stage 1		Persistent absence during Key Stage 1	
		School	School	National	School	National	School	National	
Summary	All Pupils	29	100%	100%	-	-	-	-	
Gender	Male	14	48%	51%	-	-	-	-	
	Female	15	52%	49%	-	-	-	-	
Prior Attainment	Higher attainers	18	62%	2%	-	-	-	-	
	Middle attainers	3	10%	4%	-	-	-	-	
	Lower attainers	6	21%	3%	-	-	-	-	
Pupil Premium	FSM (in last 6 years)	5	17%	25%	-	-	-	-	
	Not FSM (in last 6 years)	24	83%	75%	-	-	-	-	
FSM	FSM	5	17%	25%	-	-	-	-	
	Not FSM	24	83%	75%	-	-	-	-	
Term of Birth	Summer Term	13	45%	34%	-	-	-	-	
	Spring Term	4	14%	32%	-	-	-	-	
	Autumn Term	12	41%	34%	-	-	-	-	
SEN Group	SEN Support	2	7%	13%	-	-	-	-	
	No SEN	27	93%	83%	-	-	-	-	
EAL	First language English	29	100%	79%	-	-	-	-	
Ethnicity	White	29	100%	72%	-	-	-	-	

Census information

KS1's latest academic year uses the Spring 2023 DfE census – [learn more](#) · [See recent Aspire updates](#)