

2022 Value Added has only been calculated for pupils who we received EYFSP data as part of the 2020 FFT Results Service

St Cuthbert's Catholic Primary School, Seaham

2022 KS1 VA

# Overview

## KS1 Attainment 2022 · Actual results

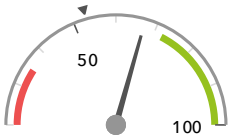
30 pupils

% Expected Standard + (Re, Wr, Ma)

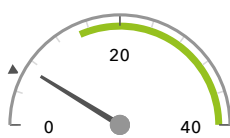
% Higher Standard (Re, Wr, Ma)

67%

7%



In line with the national average (53%) ◀



In line with the national average (6%) ◀

## KS1 Progress 2022 · Value Added

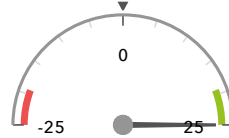
28 matched pupils

% Expected Standard + (Re, Wr, Ma)

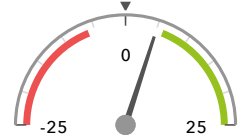
% Higher Standard (Re, Wr, Ma)

+25%+

+5%



Significantly above the national average (0%) ◀



In line with the national average (0%) ◀

## KS1 higher and lower performing pupil groups 2022

Minimum group size: 5

	Higher performing	Lower performing
<b>Overall achievement</b> pupil progress	Autumn Term (9) + Middle attainers (13) + No SEN (25) +	Summer Term (10)
<b>KS1 reading achievement</b> pupil progress	Middle attainers (13) Autumn Term (9) Spring Term (9)	Summer Term (10)
<b>KS1 writing achievement</b> pupil progress	Autumn Term (9) Middle attainers (13) No SEN (25)	
<b>KS1 mathematics achievement</b> pupil progress	Autumn Term (9) Middle attainers (13) No SEN (25)	Summer Term (10)

### Census information

KS1's latest academic year uses the Spring 2023 DfE census – [learn more](#) · [See recent Aspire updates](#)